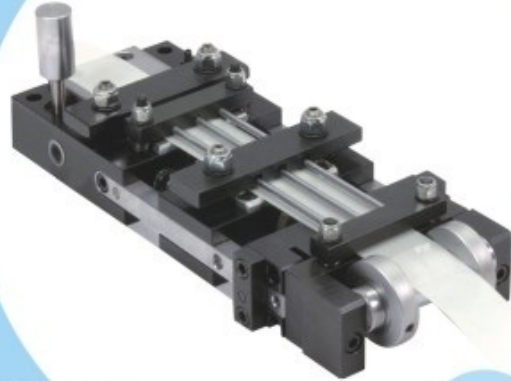




# Rathee Automation & Tools

Simplifying Processes



World Class Quality Products  
For Coil Feeding Systems & Leveling Technology  
RATeX - Rathee Automation Technologies for nEXt generation

# Company Profile

We, **Rathee Automation & Tools**, are a prominent **manufacturer, supplier, importer, exporter, wholesaler / distributor, trader and service provider**, undertaking projects for **Press Room Automation, Material Handling Equipments**. We provide complete solutions right from product selection, application support to the sales and after sales services. We are competent of providing **Press Room Automation, Material Handling Equipment** to all scales of industries, be it small, medium or large. Besides, all our services are offered at the most reasonable prices that suit the clients' budget. As a client centric organization, we are pledged to provide the quality works to our clients.

We are supported by efficient and experienced professionals who hold years of technical experience in this domain. Their knowledge helps us to provide excellent solutions to our clients and earn their goodwill. Before providing services, our team analyzes the client's requirements, business needs, availability of resources and budget. After considering all these aspects, they draft the right work strategies and plans. Our team suggests the right vendors to the clients for the procurement of quality products. They also provide training to clients' employees about the functioning and maintenance of these products. Our services are appreciated due to their advanced technology implementation, reliability, timely completion and cost-effectiveness.

We are led by the Guiding Principles of our mentor, **Late Shri Sunil Dutt Rathee ( Founder)** who always strived for fulfilling commitments at any cost through quality products, round the clock service and economical viable solutions while continuously improving values to our products and services. Under his leadership, we have been successful in taking our business to the pinnacle of success and mustering a long list of satisfied clients.

Rathee Automation & Tools



**Our Vision :-** We intend to be a globally leading, competitive Industrial Automation & Service Provider Company delivering improved value & Innovative solutions.

**Our Mission & Values :-** ★ Be customer Centric – Analyze, design, develop and provide best solution for customer keeping his finances and quality requirement in consideration.

★ Be the Preferred choice – for all stockholders (preferred employer, preferred Solution provider, preferred supplier, and preferred business partner).

**Why Us? ★ Market Credibility ★ Reliable Products & Services ★ Reasonable Prices ★ Well established Quality Procedures ★ Timely Completion of the Projects ★ Customized solutions ★ After Sale Service Support**

## Our Product Range

**We are providing the products and services for :-** ★ Press Room Automation - ★ Pneumatic Feeder  
★ Straighteners ★ De-Coilers ★ NC Servo Feeder ★ Gripper Feeder ★ Strip Lubricator ★ Cut-To- Length Lines  
★ Pneumatic Cutter ★ Material Handling Equipments ★ Die Components & Accessories ★ Die Spring etc.

## Advantage

★ Increased Productivity ★ Man Power Saving ★ Cost Saving ★ Better Space Utilization ★ Accuracy  
★ Enhanced Product Quality ★ Time Saving ★ Reduces Scrap and Rework

## The Best Quality Air Feeders

Our standard stock and feed clamps are machined from coild-rolled steel and can accept additional machining to accommodate special material shapes. Competitive feeds have clamps made of brittle powdered metal.

Stop block is machined from solid steel to accept the impact of the slide block moving back and forth. Competitive feeds have aluminum stop blocks.

Actuating valve that controls feed and stock clamps requires no valve block and gasket as found on competitive feeds.

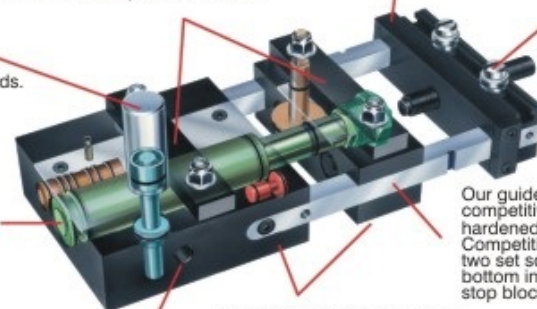
Stock guide rollers are recessed in the slotted stop block. This enables material to move to the feed clamp without binding, side slipping or flopping up and down. It also provides easier access to the feed length adjustment screw.

A single hard chrome-plated main piston completely encloses the control tube that supplies air to the slide block. This piston slides in and out of a replaceable steel sleeve. Competitive feeds use two thin-walled tubes plus a main piston rod these part move in and out of an aluminum body that doesn't have steel liners.

Our guide rails are more massive than rails found on competitive feeds. They're machined from alloy steel and hardened and drawn to a level of maximum fatigue resistance. Competitive models use plated mild steel. Keyed clamps with two set screws lock the stop block in position from top to bottom instead of at only one point. The rails are recessed into stop block, slide block and main body feed.

Air inlets are on both sides of the feed instead of just one.

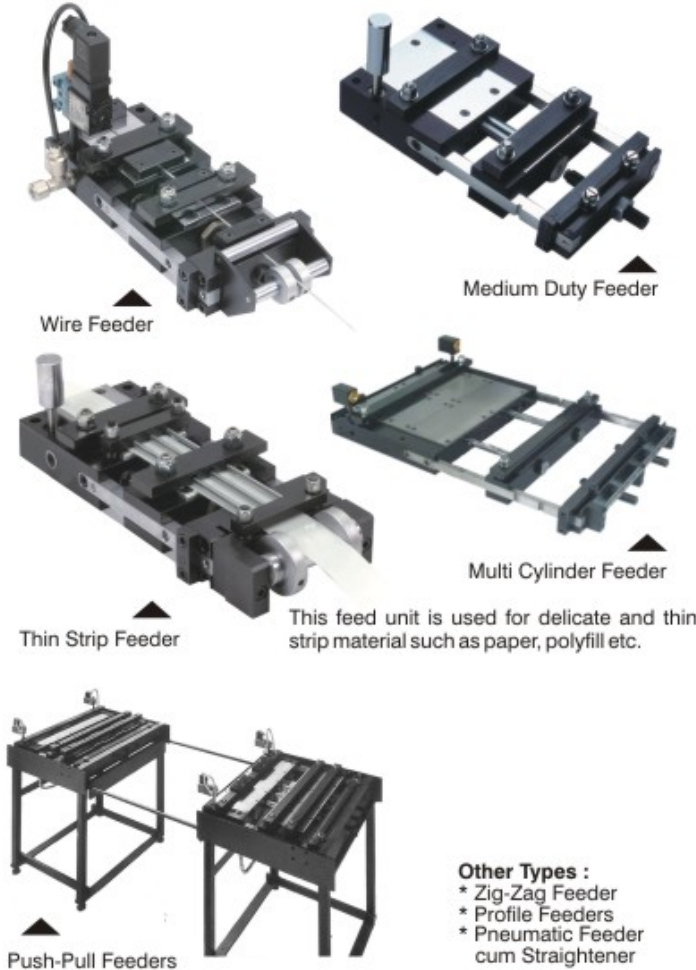
Main body and slide block are machined from a single piece of aircraft-grade aluminum. This eliminates cover plates and flimsy gaskets found on competitive feeds. And the leakage associated with them.



Our Standard Models Range

**Application :**

RaTeX feeders are used in different areas of production of sheet metal components, door-hinges electrical stamping & lamination, relays, gaskets, thermostats, auto part, circular saw, clutch plates wire components of plastic or paper are to make the production faster and accurate.



| Series                            | Type   | Strip Width max. mm | Stroke Length mm | Strip Thickness | Max. Stroke /Min.* |
|-----------------------------------|--------|---------------------|------------------|-----------------|--------------------|
| NORMAL                            | RAF-01 | 52                  | 52               | 1.00            | 280-50             |
|                                   | RAF-02 | 52                  | 102              | 1.00            | 200-30             |
|                                   | RAF-03 | 52                  | 152              | 1.00            | 160-20             |
|                                   | RAF-04 | 52                  | 202              | 1.00            | 130                |
|                                   | RAF-05 | 52                  | 252              | 1.00            | 110                |
|                                   | RAF-06 | 102                 | 52               | 1.00            | 260-50             |
|                                   | RAF-07 | 102                 | 102              | 1.00            | 190-30             |
|                                   | RAF-08 | 102                 | 152              | 1.00            | 150-20             |
|                                   | RAF-09 | 102                 | 202              | 1.00            | 110                |
|                                   | RAF-10 | 102                 | 252              | 1.00            | 90                 |
|                                   | RAF-11 | 102                 | 52               | 1.00            | 210-40             |
|                                   | RAF-12 | 102                 | 102              | 1.00            | 160-20             |
|                                   | RAF-13 | 102                 | 152              | 1.00            | 120                |
|                                   | RAF-14 | 102                 | 202              | 1.00            | 90                 |
|                                   | RAF-15 | 102                 | 252              | 1.00            | 80                 |
| MIDDLE                            | RAF-16 | 102                 | 52               | 2.30            | 260                |
|                                   | RAF-17 | 102                 | 102              | 2.10            | 180                |
|                                   | RAF-18 | 102                 | 152              | 1.90            | 150                |
|                                   | RAF-19 | 102                 | 202              | 1.70            | 120                |
|                                   | RAF-20 | 102                 | 252              | 1.60            | 90                 |
|                                   | RAF-21 | 102                 | 52               | 2.10            | 240                |
|                                   | RAF-22 | 102                 | 102              | 1.90            | 170                |
|                                   | RAF-23 | 102                 | 152              | 1.80            | 140                |
|                                   | RAF-24 | 102                 | 202              | 1.70            | 110                |
|                                   | RAF-25 | 102                 | 252              | 1.60            | 90                 |
|                                   | RAF-26 | 152                 | 52               | 1.70            | 230                |
|                                   | RAF-27 | 152                 | 102              | 1.50            | 160                |
|                                   | RAF-28 | 152                 | 152              | 1.30            | 130                |
|                                   | RAF-29 | 152                 | 202              | 1.10            | 100                |
|                                   | RAF-30 | 152                 | 252              | 1.10            | 80                 |
| MIDDLE 2 PULLING CYLINDERS        | RAF-31 | 207                 | 52               | 1.50            | 250                |
|                                   | RAF-32 | 207                 | 102              | 1.30            | 180                |
|                                   | RAF-33 | 207                 | 152              | 1.10            | 150                |
|                                   | RAF-34 | 207                 | 202              | 1.00            | 140                |
|                                   | RAF-35 | 207                 | 252              | 0.90            | 100                |
|                                   | RAF-36 | 307                 | 52               | 1.10            | 230                |
|                                   | RAF-37 | 307                 | 102              | 0.90            | 160                |
|                                   | RAF-38 | 307                 | 152              | 0.70            | 130                |
|                                   | RAF-39 | 307                 | 202              | 0.50            | 110                |
|                                   | RAF-40 | 307                 | 252              | 0.50            | 90                 |
| HEAVY DUTY                        | RAF-41 | 157                 | 102              | 3.90            | 140                |
|                                   | RAF-42 | 157                 | 202              | 3.60            | 120                |
|                                   | RAF-43 | 157                 | 302              | 3.10            | 70                 |
|                                   | RAF-44 | 207                 | 102              | 3.10            | 130                |
|                                   | RAF-45 | 207                 | 202              | 3.10            | 110                |
|                                   | RAF-46 | 207                 | 302              | 3.10            | 70                 |
|                                   | RAF-47 | 307                 | 102              | 3.10            | 120                |
|                                   | RAF-48 | 307                 | 202              | 3.10            | 95                 |
|                                   | RAF-49 | 307                 | 302              | 2.60            | 60                 |
| HEAVY DUTY 2 PULLING CYLINDER     | RAF-50 | 462                 | 102              | 3.10            | 120                |
|                                   | RAF-51 | 462                 | 202              | 2.50            | 100                |
|                                   | RAF-52 | 462                 | 302              | 2.00            | 80                 |
|                                   | RAF-53 | 462                 | 402              | 1.80            | 60                 |
|                                   | RAF-54 | 612                 | 102              | 2.50            | 110                |
|                                   | RAF-55 | 612                 | 202              | 2.00            | 95                 |
|                                   | RAF-56 | 612                 | 302              | 1.80            | 75                 |
|                                   | RAF-57 | 612                 | 402              | 1.50            | 55                 |
| HEAVY DUTY 4,5,6 PULLING CYLINDER | RAF-58 | 307                 | 102              | 4.50            | 115                |
|                                   | RAF-59 | 307                 | 202              | 4.00            | 80                 |
|                                   | RAF-60 | 307                 | 302              | 3.50            | 80                 |
|                                   | RAF-61 | 610                 | 202              | 3.00            | 90                 |
|                                   | RAF-62 | 610                 | 402              | 2.50            | 70                 |
|                                   | RAF-63 | 710                 | 302              | 2.10            | 60                 |

**Features of RaTeX Feeders**

- **Material Quality :** All items which are subjected to sliding motion or shocks are extra hardened or hard-chrome plated. The cylinder liners are in hardened brass.
- **Stroke of Feed Accuracy :** Very strong front and rear shock-absorbers guarantee a very high stroke or feed accuracy. Feed accuracy of  $\pm 20$  microns assured depending on the type of Tooling & operating conditions.
- **Compact, rigid and strong structure** which has negligible wear characteristics.
- **Interchangeability** from one die to the other because of its simple installation with only two mounting screws.
- **Durable** in Indian working conditions because of extremely hard Aluminum alloy feed body there is no oxidation due to wet air remaining inside the feeder.
- **Quiet** during operation.
- **Low air consumption** makes it more economical because it saves electricity.

\*The best solution for all your press room automation requirements

\* Max. Strokes/Min was calculated at 6 bars no material on feeder

## NC Servo Roll Feeders

**RaTeX** Servo roll feeders are built for long lasting durability and dependability to provide high speed, precision, and power required for wide range of gauge for material stamping applications with user-friendly controls to ensure faster set-ups and high production rates.

### Specifications & Features: -

- Brushless Servo Drive for High precision feeding
- Feed Rollers are hardened, grinded and treated for low wear and precision
- Components are hard Chrome plated for resistance (HRC 60)
- Precision gear Drive , Sealed bearings
- User Friendly touch screen HMI for easy operation
- Auto/Manual mode
- Adjustable height cabinet for press line alignment
- Pneumatic Roll pressure and Pilot release
- Wide range : Width - 200-1400 mm, Thickness - 0.3-6.0 mm



## High Speed Mechanical Gripper Feeders.

### APPLICATION

**RaTeX** Mechanical gripper feeder are perfect solution for feeding strip on medium /high speed power presses. These have accurate and easy pitch adjustment where its accuracy in tune of  $\pm 10$  microns is obtainable with piloting.

### Features :

- All rotating parts are fitted with anti friction bearings to provide long life & reduce maintenance
- The gripper are made out of carbide material for long life
- High speed upto 650 strokes / Min.
- Roller cam for pilot release setting for precision adjustment of the fixed gripper
- Silent & trouble free operation
- Micrometer pitch setting arrangement
- Mechanically synchronization with the press avoiding feeding mismatch at high speed
- Drive from the press crankshaft to the gripper is fitted with an overload safety coupling
- Hardened gears providing in the right angle gear box for long life.

### Specification

Our Standard Models Range

| TYPE    | STRIP WIDTH (mm) | STROCK LENGTH (mm) | STRIP THICKNESS Max. (mm) | SPEED Max. S.P.M |
|---------|------------------|--------------------|---------------------------|------------------|
| RGF-1   | 5-130            | 130                | 2.6                       | 600              |
| RGF-II  | 5-200            | 200                | 2.3                       | 480              |
| RGF-III | 5-250            | 250                | 2.1                       | 375              |
| RGF-IV  | 5-300            | 300                | 1.9                       | 300              |
| RGF-V   | 10-400           | 400                | 1.5                       | 250              |

## Strip Lubricator

### APPLICATION

**RaTeX** Strip Lubrication devices uses Stock Oiler to increase die life and eliminates "coffee-can mess thereby making operation safer and more efficient not to mention the savings due to reduced tool wear, improved part quality, and increased production rates. Oil flow (quantity and time) to both rollers is individually controlled for any operational requirement. **RaTeX** Strip Lubricator is made of High quality material and is easy to install system. For almost every strip width available, also in pneumatic or motorised versions. Optional - Electric pump.



## RATEX Coil-Handling / Straightening System

### Strip Straighteners

RaTex Motor driven straightening units are equipped with set of pinch rollers & straightening rollers supported in needle bearings. All rollers are made from high chrome steel hardened and ground. Each roller is adjustable from control to ensure parallelism. Loop control system automatically trips the motor on and off to ensure the required stock advance per minute. Variable drive (optional) is provided to match the straighteners feed accordingly to the feed of the press.



| S. No. | Coil Width (mm.) | Coil Thickness (mm.) |
|--------|------------------|----------------------|
| RMSA   | 200 To 500       | 0.5 To 2mm           |
| RMSB   | 200 To 500       | 1 To 3.5mm           |
| RMSC   | 200 To 500       | 1.6 To 5mm           |

RaTex strip straighteners are design to work for various types of material.



### Compact De-Coiler Cum Straightens (Space Saver)

#### APPLICATION

Where space is a constraint and material being process is less than 2.5mm thick a Ratex Compact coil holder & Straightener could be the solution. Design to sales space, there is looping area between the de-ciler & straighter. Space savers offer compact design with the facility of rapid coil change.

RaTex compact de-coiler straighten consisting of two basic assemblies; Non-Motorized De-coiler with screw type centrally expandable jaws, spindle rotating on rolling bearing, complete with mechanical brake & arrangement with torque limiter and straighten head with hardened and ground straightener & pinching rollers. These units are available in a broad range of width, thickness and net output production capacity combination.

#### Specification

Our Standard Models Range

| TYPE   | MAX. WEIGHT (Kg.) | MAX. WIDTH (mm) | THICKNESS (mm) | JAW EXPANSION | COIL OD MAX. (mm) | POWER H.P. |
|--------|-------------------|-----------------|----------------|---------------|-------------------|------------|
| RDCS-1 | 500               | 150             | 0.35 - 1.5     | 350 - 500     | 900               | 2.0        |
| RDCS-2 | 500               | 200             | 0.4 - 2.0      | 350 - 500     | 1000              | 2.0        |
| RDCS-3 | 750               | 250             | 0.5 - 2.5      | 350 - 500     | 1000              | 2.0        |
| RDCS-4 | 1000              | 300             | 0.5 - 2.5      | 375 - 525     | 2000              | 2.0        |

All above equipments are designed for line speed of 12-15 Mtrs. per minute. Higher or lower line speeds are available on request.

### De-Coiler Cum Straightener (Cradle Type)

RaTex combine coil cradle & straightening are ideally suited to processing thicker strip where floor space is limited. The cradle comprises a fabricated frame with support rollers and adjustable side retaining plates. In coil cradle the coil is placed on power driven hardened & ground pinch rollers to unwind the stock. Adjustable side plate use for centering & accommodate stock width. Four power driven hardened & ground coil rest rollers in the cradle mounted in antifriction bearing arranged in arc to equalize weight distribution. Loop control system automatically trips the motor on & off and ensures the required stock advance per minute. Variable drive is optionally provided to match the straightened feed according to the speed of the press.



To select your cradle type de-coiler cum Straightener please give the following information :

Width of material.....mm Min. & Max. Strip thickness..... to.....mm.

Outer diameter of coil..... Inner diameter of coil.....Type of material .....

Weight of Coil.....Kg.

## De-Coiler (Motorized & Non-Motorized) & Re-Coiler

**RaTeX** De-Coilers are fabricated as per set industrial standards, and comprehensive range available in both motorized and non-motorized form. Stringently checked on quality parameters, these are available in various capacities and specifications to meet variegated demands of clients.

**Features:** - • Automatic centering of the coiler for easy unwinding • Loop control system controls for unwinding the stroke automatically (Motorized) • Compact assembly to ensure optimum utilization of floor area

To Select your De-Coiler Please give the following information :

Width of coil.....mm

Weight of coil.....kg.

Inner diameter of coil.....mm.

Outer diameter of coil.....mm.



Non Motorized De-Coiler



Motorized De-Coiler

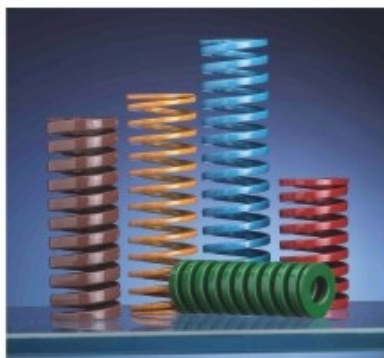


Double Side De-Coiler

### Specifications

| TYPE  | MAX. WEIGHT (Kg.) | MAX. WIDTH (mm) | Coil ID Range (mm.) | COIL OD MAX. (mm) | POWER H.P. |
|-------|-------------------|-----------------|---------------------|-------------------|------------|
| RMD-1 | 150               | 100             | 325-475             | 600               | 1          |
| RMD-2 | 300               | 150             | 350-500             | 800               | 1          |
| RMD-3 | 500               | 200             | 375-525             | 1000              | 1          |
| RMD-4 | 1000              | 300             | 425-550             | 1200              | 2          |
| RMD-5 | 2000              | 400             | 425-550             | 1200              | 2          |
| RMD-6 | 3000              | 500             | 425-550             | 1200              | 3          |

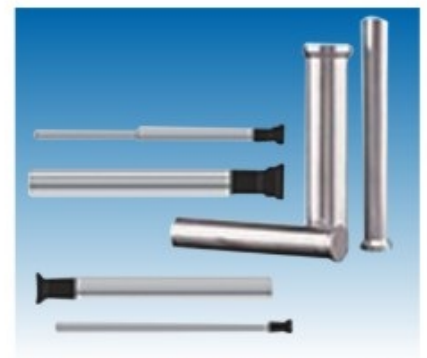
### Die Component & Accessories



Die Spring (ISO & JIS)  
Brand : Special Spring Italy



Ejector Pins (Febro & DME Std.)  
All size as per requirement



HSS / HCHCR Punch  
All size as per requirement

**Other Die Components & Accessories :-** • Ball bearing Cages • Spring Plunger (Ball Cages) • Air Ejector pins • Parting lock • Taper Interlock • Latch Lock • Ejector Blades • Ejector Sleeves • Mould Base • Mould Date Indicator • Guide Pin and Bush • Guide Post • Air Vents • Polyurethane elastomers

## Material Handling

RaTeX Material Handling Equipments are precision engineered and custom designed to meet the application based requirement of the client. Our Products includes but not limited to the following :



- Drum Equipments - Drum Trolley, Drum Stackers
- Towing Equipments - Tow Truck, Tow Trolley
- ForkLift - Electric, Diesel
- Pallets, Pallet Shuttle, Jib Crane, Reach Truck, Order Picker etc.



Conveyor Roller Belt Driven



Trolley

\* Technical specifications are subject to change to suit an application.

\* Rathee Automation can provide many additional feature and products to fully automate the entire feed process



## Cut-To-Length Lines

The cut to length lines automatically feeds & cuts to even or random as required lengths of sheets by power shear/ fly shear Using high precise straighteners. the machine has a single or double straightener as per requirement.

These are technically accurate machines that have been assessed on performance & consistency in output before releasing to market.

### FEATURES :

- Cut to length lines varied from 400 mm to 2500 mm width
- Coil thickness varies from 0.20 mm to 16 mm ( CRC, HR, CRNGO & S.S. Material)
- Weight of Coil varies from 3.0 ton to 30 tons
- Operation : Hydraulic Power and Pneumatic Clutch
- Construct : Made up of EN-31 material roller, hardened gears etc.
- Control Line : Electrical Stopper & Servo Motor based.
- Control Line Encoder : PLC Based

### SPECIFICATIONS & FEATURES :

- We are manufacturing CTL Lines upto 400 - 3000 mm coil Width.
- Thickness of the Coil varies 0.20 - 20 mm of CRC, HR, Alluminium & SS Material.
- Coil Weight varies 3.0 MT to 30 MT.
- Shearing machines are available both type. (Pneumatic clutch operated & Hydraulically operated).
- Straightener / Leveler machine rollers are made of Alloy Steels.
- Driven by gears or auxiliary gear box.
- Line speed upto 40 Meters per Minute.
- Mechanical stopper control line.
- Variable Speed of line - optional.
- Electrical Stopper Control line - Optional.
- Encoder with PLC Control base line - Optional.
- NC Servo Motor high speed control line - Optional.
- Back tray, motorised Conveyor or hydraulic Stacker - Optional.

### Our Network :

- Delhi ● NCR ● Haryana ● Rajesthan ● Uttrakhand ● Mumbai ● Pune
- Ludhiana ● Chandigarh ● Ahmedabad ● Baroda ● Rajkot ● Kolkata ● Chennai & Guwahati etc.



**Hello** Customer Care No.  
098 605 95 372

## Rathee Automation & Tools

### Regd. office / works :

Plot No.76, Sector-3, HSIIDC, Bawal, Rewari-Haryana-123501  
Tel: +91-09860595372, 09729294197, 09467543036  
E-mail : ratheindprod@gmail.com, sales@ratheindprod.com  
Web.: www.ratheindprod.com / www.pneumaticfeeders.in  
<http://www.facebook.com/ratheindustrialproducts>.

Branch Office